

**「生協アプリ」の登録手順**  
**Registration procedure for the Co-op App**

APU COOP

1

**CAUTION** 生協加入時に登録された学生本人のメールアドレスが必要です。保護者や他人のものでは登録できません。

The student's email registered at the time of joining the co-op are required. Parents or other persons cannot be registered.

Let's Start!

APU COOP

2

1 / 17

「サインアップ」をタップ  
tap "Sign up"

APU COOP

3

2 / 17

生年月日と、生協加入時に登録された学生本人の「メールアドレス」を入力

Enter the date of birth and the student's "email address" registered when joining the co-op

TAP

APU COOP

4

3 / 17

メールアドレスを入力  
Enter your email address

TAP

ここは入力しないでください  
Do not enter here

APU COOP

5

4 / 17

Microsoft社から登録したメールアドレスに送られてきた確認コードを入力します。

Enter the confirmation code sent to your registered email address from Microsoft.

TAP

APU COOP

6

5 / 17

ここは入力しないでください  
Do not enter here

パスワードを決めて、同じパスワードを2か所に入力してください  
Choose a password and enter the same password twice

CAUTION Password must be at least 8 characters long and must not contain uppercase letters, lowercase letters, numbers, or symbols

APU COOP

7

6 / 17

「日本+81」を選択  
If you have phone number which can receive SMS, select your phone number country code

携帯電話番号を入力  
Enter mobile phone number

TAP

If you want to get Japanese SIM card, you can check about it from the summary link.

APU COOP

8

7 / 17

SMSに届いた6桁の数字を入力  
Enter the 6-digit number received on SMS

TAP

APU COOP

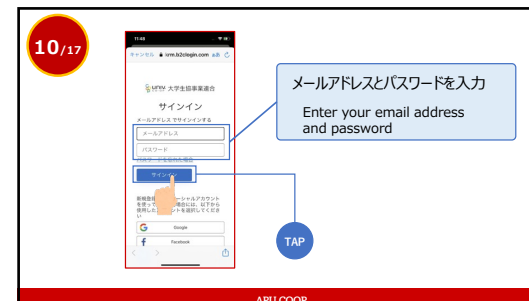
9



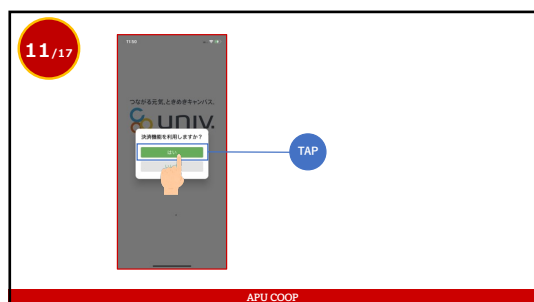
10



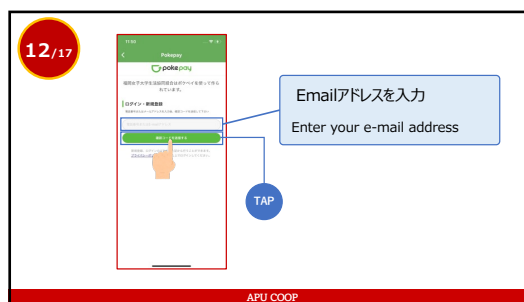
11



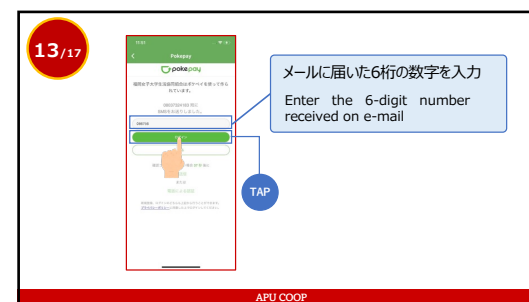
12



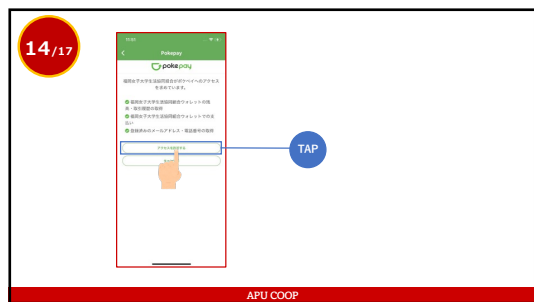
13



14



15



16



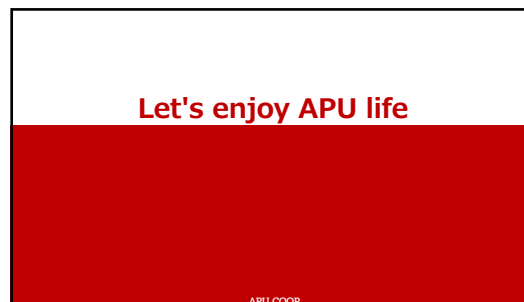
17



18



19



20